

Emigration of the ancestors of
the Banjar people of Kalimantan
from the mother's side
mtDNA B4a2a

Ahmad Sudirman

Stockholm - SWEDEN
November, 2 2023

Emigration of the ancestors of the Banjar people of Kalimantan from the mother's side

mtDNA B4a2a

© Copyright 2023 Ahmad Sudirman*
Stockholm - SWEDEN

Following in the footsteps of the ancestors of the Banjar people of Kalimantan through my wife's DNA

After 3 years of marrying my wife who came from Banjar Kalimantan, it occurred to me to look for traces of my wife's ancestors.

There has long been a desire to research the roots, where the ancestors of the Banjar people of Kalimantan actually came from. After I discussed with my wife about my desire to trace the ancestors of the Banjar people of Kalimantan, it was decided that my wife's DNA would be sent to FamilyTreeDNA for analysis.

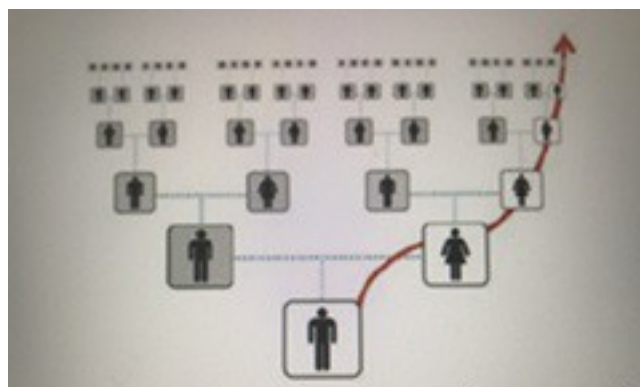
DNA or deoxyribonucleic acid is a chemical that carries genetic information, found in identical copies in every cell of an organism. The function of DNA is to store information for a long time, which influences the development and function of organisms (**Wikipedia**)



Picture number 1. How to take DNA (FamilyTreeDNA)

Looking for traces of the ancestors of the Banjar people of Kalimantan from the mother's side using mtDNA

Mitochondrial DNA (mtDNA) is passed almost unchanged from mother to offspring



Picture number 2. mtDNA Direct maternal line (FamilyTreeDNA)

Confirmed my wife's mtDNA Haplogroup is B4a2a



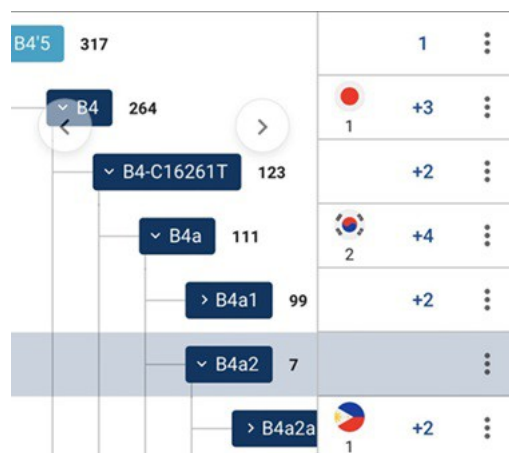
Picture number 3. Confirmed mtDNA Haplogroup B4a2a (FamilyTreeDNA)

mtDNA Haplogroup B is the parent of mtDNA Haplogroup B4a2a



Picture number 4. mtDNA Haplogroup B (FamilyTreeDNA)

mtDNA Haplogroup B formed between 40,000 and 50,000 years ago (FamilyTreeDNA)



Picture number 5. mtDNA Haplogroup B4a2a descended from B4 (FamilyTreeDNA)

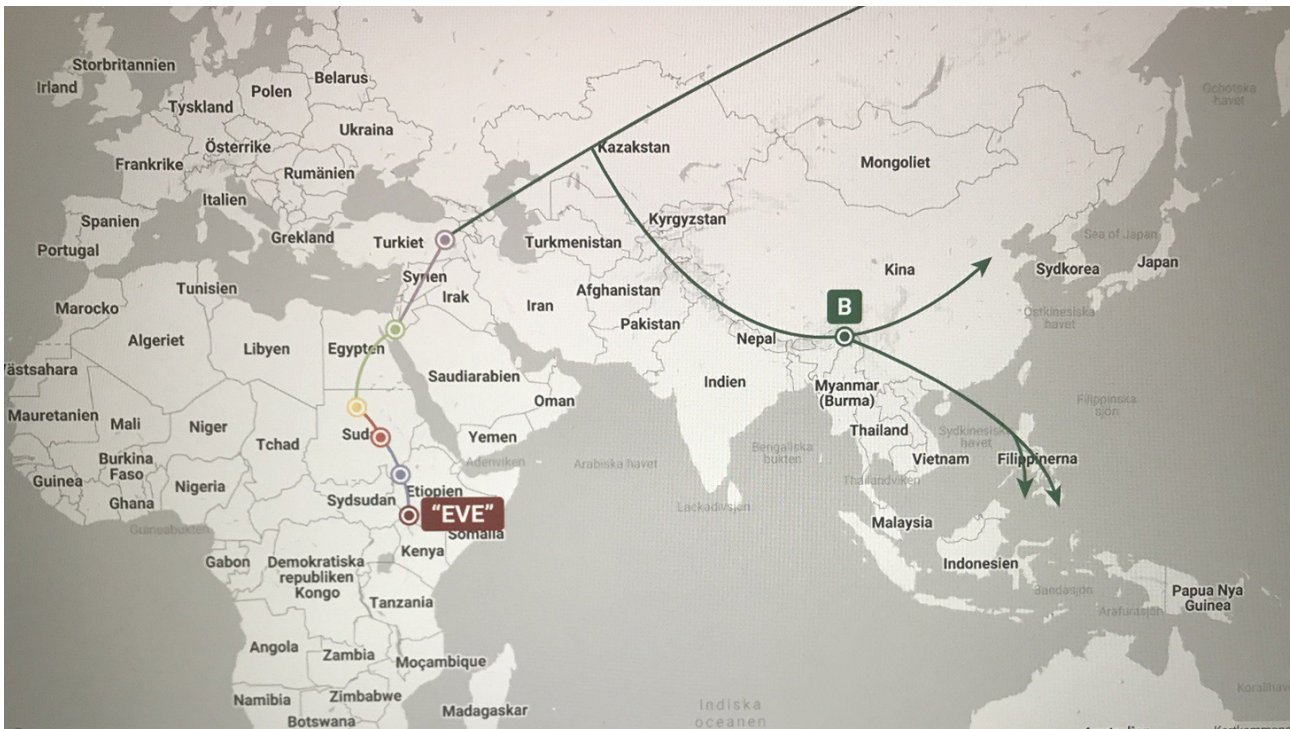


Picture number 6. 60% of Chinese people are now descendants of mtDNA Haplogroup B (FamilyTreeDNA)

Emigration mtDNA Haplogroup B4a2a Maternal ancestors of the Banjar people of Kalimantan

For thousands of years, the ancestors of the Banjar people of Kalimantan from their mother's side had mtDNA Haplogroup B from Kenya emigrated to Ethiopia, Sudan, Egypt, Turkey, Kazakhstan, Uzbekistan, Kyrgystan, Afghanistan, Pakistan, India, Buthan, Nepal, Bangladesh, Myanmar (Burma), China South, Taiwan, Philippines and Kalimantan.

Between 40,000 and 50,000 years ago the ancestral group of the Banjar people of Kalimantan from The mother's mtDNA Haplogroup B side has given birth to offspring who now live in Turkey, Kazakhstan, Uzbekistan, Kyrgystan, Afghanistan, Pakistan, India, Buthan, Nepal, Bangladesh, Myanmar (Burma), South China, Taiwan, Philippines and Kalimantan.



Picture number 7. Emigration of mtDNA Haplogroup B ancestors of the Banjar people of Kalimantan from the mother's side (FamilyTreeDNA)

Haplogroup B is found in eastern and southeastern Eurasia and throughout the Americas. This haplogroup is present in populations that originally colonized America pre-Columbian, and using American samples dating back at least 12,500 years.

This haplogroup can also be found scattered in Polynesia (FamilyTreeDNA)

My wife's mtDNA submitted to FamilyTreeDNA uncovered the ancestry of the Banjar people of Kalimantan.

Now I can answer all the questions that were in my mind about where my wife's ancestors actually came from. Where the answer is in my wife's mtDNA which was sent to FamilyTreeDNA for analysis.

Conclusion

For thousands of years, the ancestors of the Banjar people of Kalimantan from their mother's side had mtDNA Haplogroup B from Kenya emigrated to Ethiopia, Sudan, Egypt, Turkey, Kazakhstan, Uzbekistan, Kyrgyzstan, Afghanistan, Pakistan, India, Buthan, Nepal, Bangladesh, Myanmar (Burma), China South, Taiwan, Philippines and Kalimantan.

Between 40,000 and 50,000 years ago the ancestral group of the Banjar people of Kalimantan from The mother's mtDNA Haplogroup B side has given birth to offspring who now live in Turkey, Kazakhstan, Uzbekistan, Kyrgyzstan, Afghanistan, Pakistan, India, Buthan, Nepal, Bangladesh, Myanmar (Burma), South China, Taiwan, Philippines and Kalimantan.

*Ahmad Sudirman

Candidate of Philosophy degree in Psychology

Candidate of Philosophy degree in Education

Candidate of Philosophy degree in vocational education in The Industrial Programme,
Engineering Mechanics

ahmad@ahmadsudirman.se

www.ahmadsudirman.se