

Ngumbara Karuhun Sunda
Y-DNA F-M89 (Engki) sareng
mtDNA F1a1a (Enin)

Kang Cep Ahmad Sudirman

Stockholm - SWEDIA
9 Oktober 2020

Ngumbara Karuhun Sunda

Y-DNA F-M89 (Engki) sareng

mtDNA F1a1a (Enin)

Kang Cep Ahmad Sudirman*

Stockholm – SWEDIA

Nuturkeun tapak karuhun Sunda ngalangkungan DNA Kang Cep

Kang Cep parantos lami mikir ngeunaan milarian tilas karuhun Sunda. Rupa-rupa patarosan muncul, ti mana asalna karuhun Sunda ieu. Henteu tiasa kajantenan sareng kahirupan karuhun ngan ukur di Garut, Pagerageung, Tasikmalaya, Sumedang, Pangalengan, Banten sareng daérah anu aya di Jawa Barat. Numutkeun carita sajarah, karuhun ieu asalna ti Yunan. Henteu seueur jalma anu nalungtik langkung jero timana asal karuhun, naha leres karuhun ieu sumping ti sakitar Yunan.

Kang Cep digedékeun di Cirangrang, Babakanciparay, Bandung dugi ka yuswa 26 taun. Kulawarga asalna ti garut sareng pagerageung. Ayeuna ieu, saatos Kang Cep ngahontal umur 66 taun sareng 40 taun di mancanagara nyobian nalungtik sareng muka awal jalan karuhun Sunda ieu. Dimana fakta sareng buktina dicandak tina jero awak Kang Cep nyalira. Nyaéta, ku nyandak DNA Kang Cep, teras dikirimkeun ka FamilyTreeDNA pikeun dianalisis. DNA atanapi asam deoksiribonukleat mangrupikeun bahan kimia anu nyandak inpormasi genetik, aya dina salinan idéntik dina unggal sél organisme. Fungsi DNA nyaéta pikeun nyimpen inpormasi pikeun waktos anu lami, anu mangaruhan kana kamekaran sareng fungsi organism (Wikipedia)



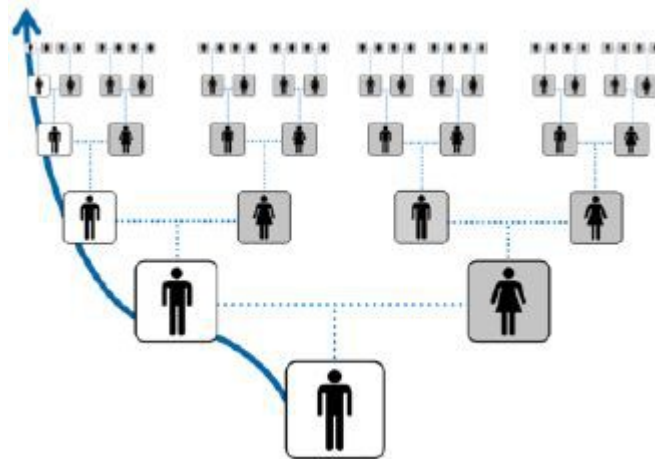
Gambar nomer 1. Kumaha nyandak DNA (FamilyTreeDNA)



Gambar nomer 2. Mesin NovaSeq Sequencing (FamilyTreeDNA)

Milari tapak karuhun engki ngalangkungan Y-DNA

Y-DNA atanapi kromosom Y diwariskeun ampir henteu robih ti bapa ka putra.



Gambar nomer 3. Y-DNA Jalur bapa langsung (FamilyTreeDNA)

Bagéan khusus ngeunaan kromosom Y nangtoskeun haplogroup Y lalaki, anu ngungkapkeun asal usul karuhunna (FamilyTreeDNA). Haplogroup mangrupikeun kelompok penduduk genetik jalma anu ngabagi karuhun sami sareng patriline atanapi matriline (International Society of Genetic Genealogy Wiki)

Dikonfirmasi Y-DNA Haplogroup kang Cep mangrupikeun F-F14885 turunan F-M89

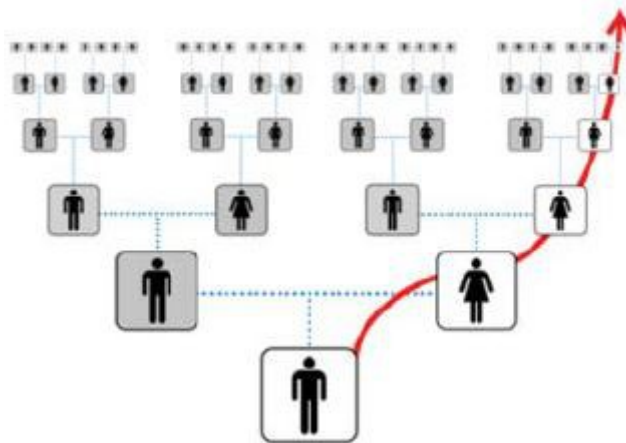
Haplogroup karuhun Engki: F-M89. Umur: 45000 taun. Daérah: Frékuénsi anu handap pisan di Éropa, Wétan Tengah sareng Asia (FamilyTreeDNA).



Gambar nomer 4. Dikonfirmasi Y-DNA Haplogroup F-F14885 turunan F-M89 (FamilyTreeDNA)

Milarian tapak karuhun enin ngalangkungan mtDNA.

Mitokondria DNA (mtDNA) diturunkeun ampir teu robah ti indung ka barudak.



Gambar nomer 5. mtDNA Jalur indung langsung (FamilyTreeDNA)

Dikonfirmasi mtDNA Haplogroup kang Cep nyaeta F1a1a

mtDNA Haplogroup F1a1a diwangun sakitar 19000 tahun ka pengker (FamilyTreeDNA).



Gambar nomer 6. Dikonfirmasi mtDNA Haplogroup F1a1a (FamilyTreeDNA)



Gambar nomer 7. mtDNA Haplogroup F1a1a diwangun sakitar 19000 taun ka pengker (FamilyTreeDNA)

mtDNA Haplogroup F nyaeta kolot ti mtDNA Haplogroup F1a1a



Gambar nomer 8. mtDNA Haplogroup F (FamilyTreeDNA)

mtDNA Haplogroup F diwangun antawis 40000 sareng 50000 taun ka pengker (FamilyTreeDNA)



Gambar nomer 9. 70% urang Cina ayeuna katurunan mtDNA Haplogroup F (FamilyTreeDNA)

Ngumbara Y-DNA Haplogroup F-M89 (Engki) sareng mtDNA Haplogroup F (Enin)

Dina rébuan taun karuhun Enki Y-DNA Haplogroup F-M89 ti KénYA ngumbara ka Étiopia, Arab Saudi, Yaman, Oman, UEA, Qatar, Bahrain, Kuwait ka perbatasan antawis Saudi Arabia, Irak sareng Iran.

Antawis 40000 sareng 50000 taun ka pengker grup karuhun Enki Y-DNA Haplogroup F-M89 ngalahirkeun turunan anu ayeuna cicing di Saudi Arabia, Yaman, Oman, UAE, Qatar, Bahrain, Kuwait, Iraq sareng Iran. Kitu ogé, nyebar di nagara-nagara Éropa sareng Amérika.

Salajengna, grup karuhun Enki Y-DNA Haplogroup F-M89, salami rébuan taun, neraskeun perjalananna ka nagara-nagara Asia Tengah, sapertos Turki, Armenia, Azerbaijan, Turkmenistan, Uzbekistan, Kazaktan, Tazikistan, Kyrgyzstan, Mongolia, Siberia sareng Cina wétan.

Pertemuan antawis grup karuhun Enki Y-DNA Haplogroup F-M89 sareng grup karuhun Enin mtDNA Haplogroup F di Siberia.

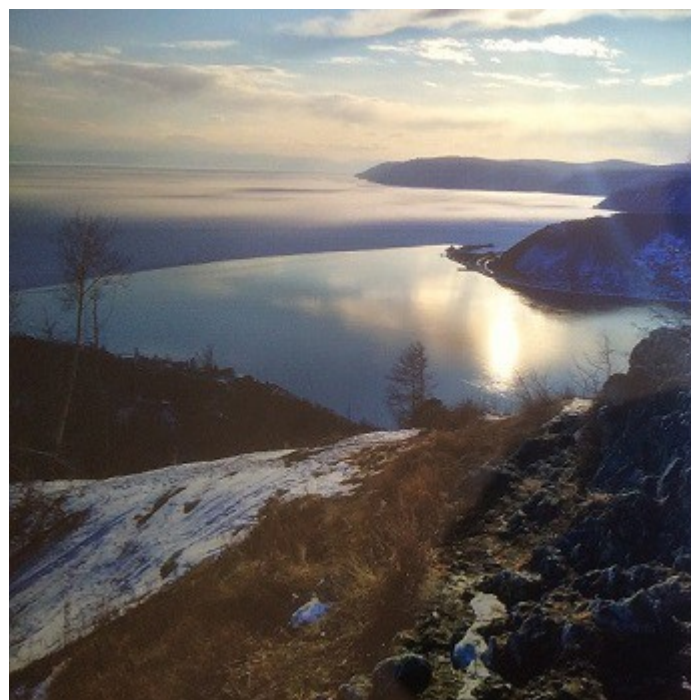


Gambar nomer 10. Ngumbara Y-DNA Haplogroup F-M89 (Engki) sareng mtDNA Haplogroup F (Enin) Karuhun Sunda (FamilyTreeDNA)

Di caket situ Baikal tempat pertemuan antawis kelompok karuhun Enki Y-DNA Haplogroup F-M89 sareng grup karuhun Enin mtDNA Haplogroup F.



Gambar nomer 11. Situ Baikal Siberia (Google maps)

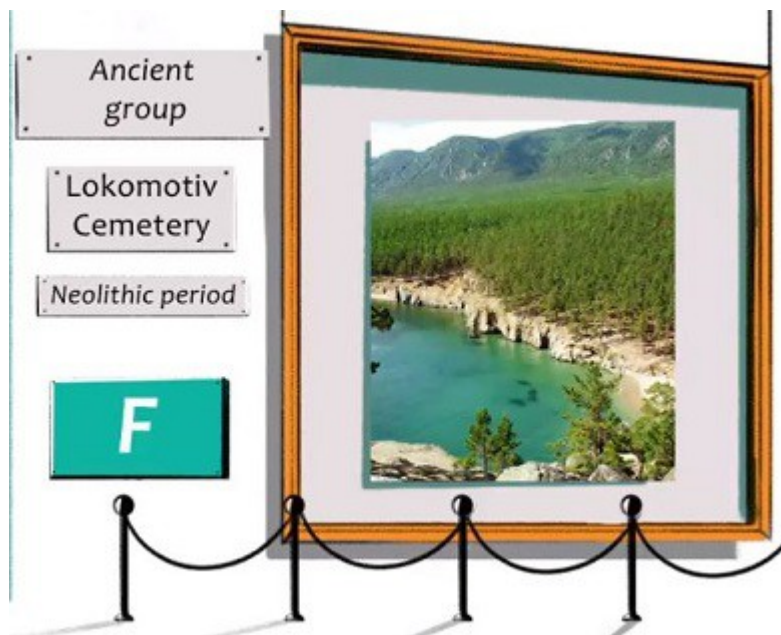


Gambar nomer 12. Situ Baikal Siberia (Google maps)



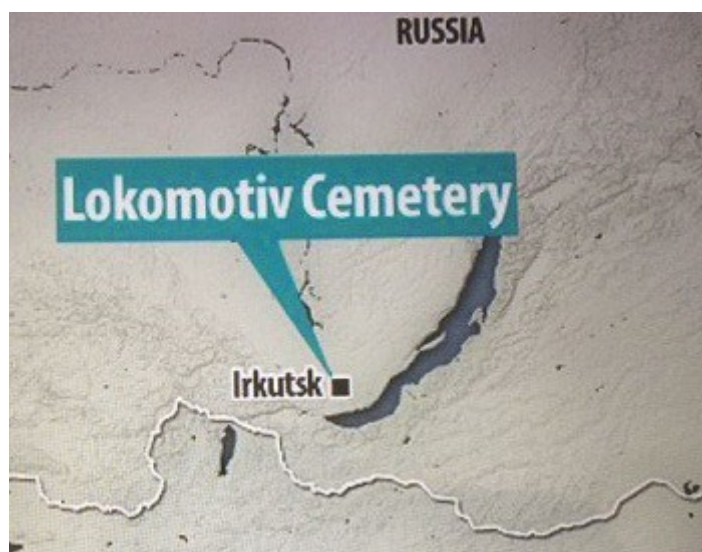
Gambar nomer 13. Situ Baikal Siberia (Google maps)

Tempat pamakaman Lokomotiv di Irkutsk Siberia. Di kuburan Lokomotiv, kelompok karuhun Enin mtDNA Haplogroup F dikubur.

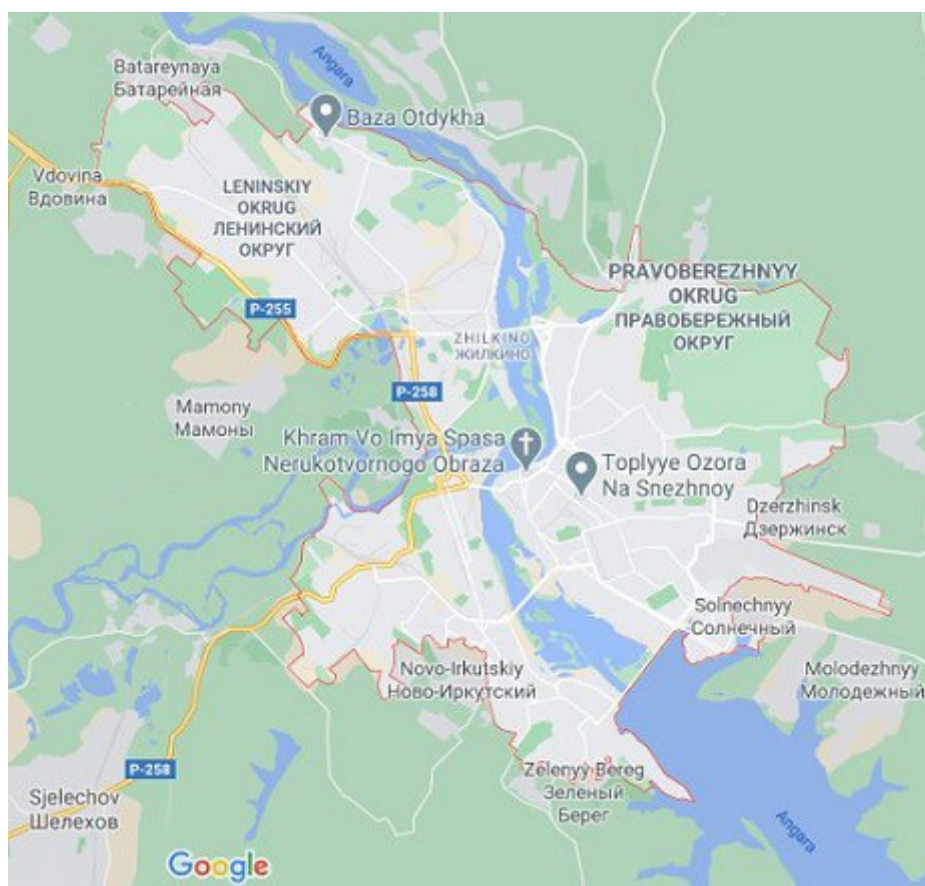


Gambar nomer 14. Kuburan Lokomotiv Siberia (FamilyTreeDNA)

Pamakaman Lokomotiv di Irkutsk Siberia.

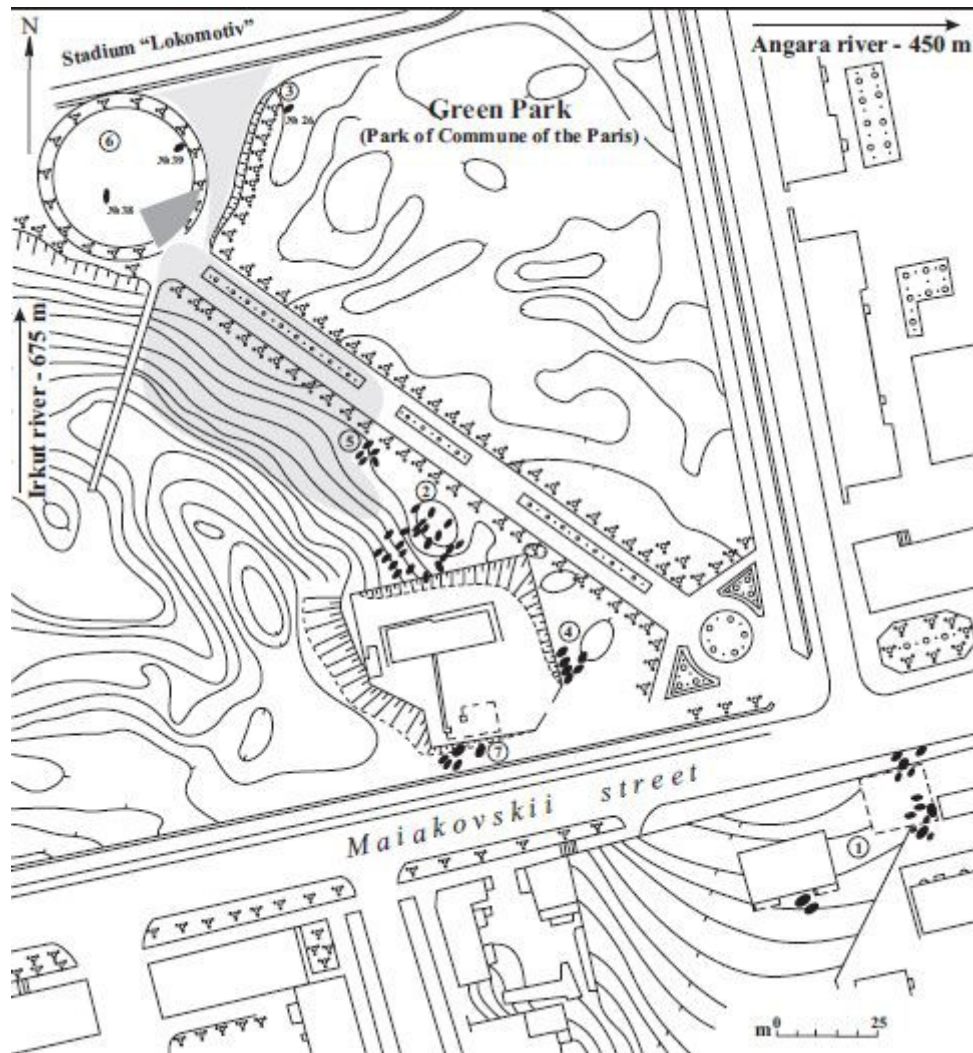


Gambar nomer 15. Kuburan Lokomotiv Irkutsk Siberia (Google)



Gambar nomer 16. Irkutsk Siberia (Google maps)

Peta Pamakaman Lokomotiv di Irkutsk Siberia.



Gambar nomer 17. Kuburan Lokomotiv Irkutsk Siberia (Lieveise, Angela, 2005, "Matrilinéal Affinities and Prehistoric Siberian Mortuary Practices: A Case Study from Neolithic Lake Baikal", Journal of Archaeological Science)

Kuburan Lokomotiv, anu dianggap mangrupikeun kuburan Neolitikum panggedéna di Asia Kalér, dianggo ku sakumpulan tukang moro anu dikenal salaku budaya Kitoi utamina salami 7000 taun ka pengker (Lieveise, Angela, 2005, "Matrilinéal Affinities and Prehistoric Siberian Mortuary Practices: A Case Study from Neolithic Lake Baikal", Journal of Archaeological Science)

Table 4: MtDNA haplogroup distribution by Lokomotiv cemetery sector

Hap	Cemetery Sector				
	2	4	5	6	7
A	2	1	0	1	0
C	1	0	0	0	0
D	4	1	0	1	1
F	8	2	2	1	2
G2a	0	0	0	0	1
U5a	1	1	0	0	0

Gambar nomer 18. Distribusi mtDNA haplogroup F (Lieverse, Angela, 2005, "Matrilineal Affinities and Prehistoric Siberian Mortuary Practices: A Case Study from Neolithic Lake Baikal", Journal of Archaeological Science)

Y-DNA sareng mt DNA kang Cep anu dikirimkeun ka FamilyTreeDNA ngabuka panutup rusiah karuhun Sunda.

Ayeuna sadaya patarosan anu aya dina pipikiran Kang Cep tiasa kajawab ti mana asalna karuhun Sunda ieu. Dimana jawaban na aya dina Y-DNA sareng mtDNA kang Cep anu dikirimkeun ka FamilyTreeDNA.

Kacindekan

Karuhun Sunda sanés ti sakitar Garut, Pagerageung, Tasikmalaya, Sumedang, Pangalengan, Banten sareng daérah sakitar Jawa Barat sareng ti Yunan. Tapi karuhun Sunda anu asalna ti kelompok karuhun Enki Y-DNA Haplogroup F-M89 nyaéta jalma ti Kénnya anu ngumbara ka Étiopia, Arab Saudi, Yaman, Oman, UEA, Qatar, Bahrain, Kuwait kana wates antara Saudi Arabia, Irak sareng Iran. Teras dina rébuan taun ngalahirkeun turunan anu ayeuna cicing di Arab Saudi, Yaman, Oman, UEA, Qatar, Bahrain, Kuwait, Irak sareng Iran. Kitu ogé, nyebar di nagara-nagara Éropa sareng Amérika.

Teras kelompok karuhun Enki Y-DNA Haplogroup F-M89, salami rébuan taun, neraskeun perjalananna ka nagara-nagara Asia Tengah, sapertos Turki, Armenia, Azerbaijan, Turkmenistan, Uzbekistan, Kazaktan, Tazikistan, Kyrgyzstan, Mongolia, Siberia sareng Cina wétan.

Samentawis grup karuhun Enin mtDNA Haplogroup F ngembangkeun sareng cicing di Cina wétan, Siberia, Mongolia. Atuh saterasna kelompok karuhun Enin mtDNA Haplogroup F ngalahirkeun sakitar 70% urang Cina ayeuna.

Janten ayeuna jelas, kang Cep anu ageung di Cirangrang, Babakanciparay, Bandung dugi ka yuswa 26 taun sareng kulawarga anu asal ti Garut sareng Pagerageung, rupina karuhun Kang Cep jauh ti Jazirah Arab sareng Asia Tengah. Upami karuhun Enki Y-DNA Haplogroup F-M89 hirup, ayeuna anjeunna yuswana 45000 taun. Atuh upami turunan Engki ti grup Y-DNA Haplogroup F-F15527 masih aya dikieuna, yuswana 40000 taun. Haplogroup F- F15527 nyaéta kolotna Haplogroup F- F14885. Kitu ogé saupami karuhun Enin mtDNA Haplogroup F hirup ayeuna, anjeunna yuswana 50000 taun. Teras, upami katurunan karuhun Enin ti grup mtDNA Haplogroup F1a1a, upami anjeunna masih hirup yuswana 19000 taun.

Ieu kang Cep, salah sahiji katurunan antawis kelompok karuhun Enki Y-DNA Haplogroup F-M89 sareng grup karuhun Enin mtDNA Haplogroup F di Siberia.



Gambar nomer 19. Kang Cep taun 1973

taun 1981

taun 2020

*Kang Cep Ahmad Sudirman

Candidate of Philosophy degree in Psychology

Candidate of Philosophy degree in Education

Candidate of Philosophy degree in vocational education in The Industrial Programme, Engineering Mechanics

E-mail: ahmad.sudirman.54@gmail.com